

**Lyddington Manor History Society**  
**Historic Building Survey**

**Wentworth Cottage**  
**8, Main Street**  
**Caldecott, Rutland**

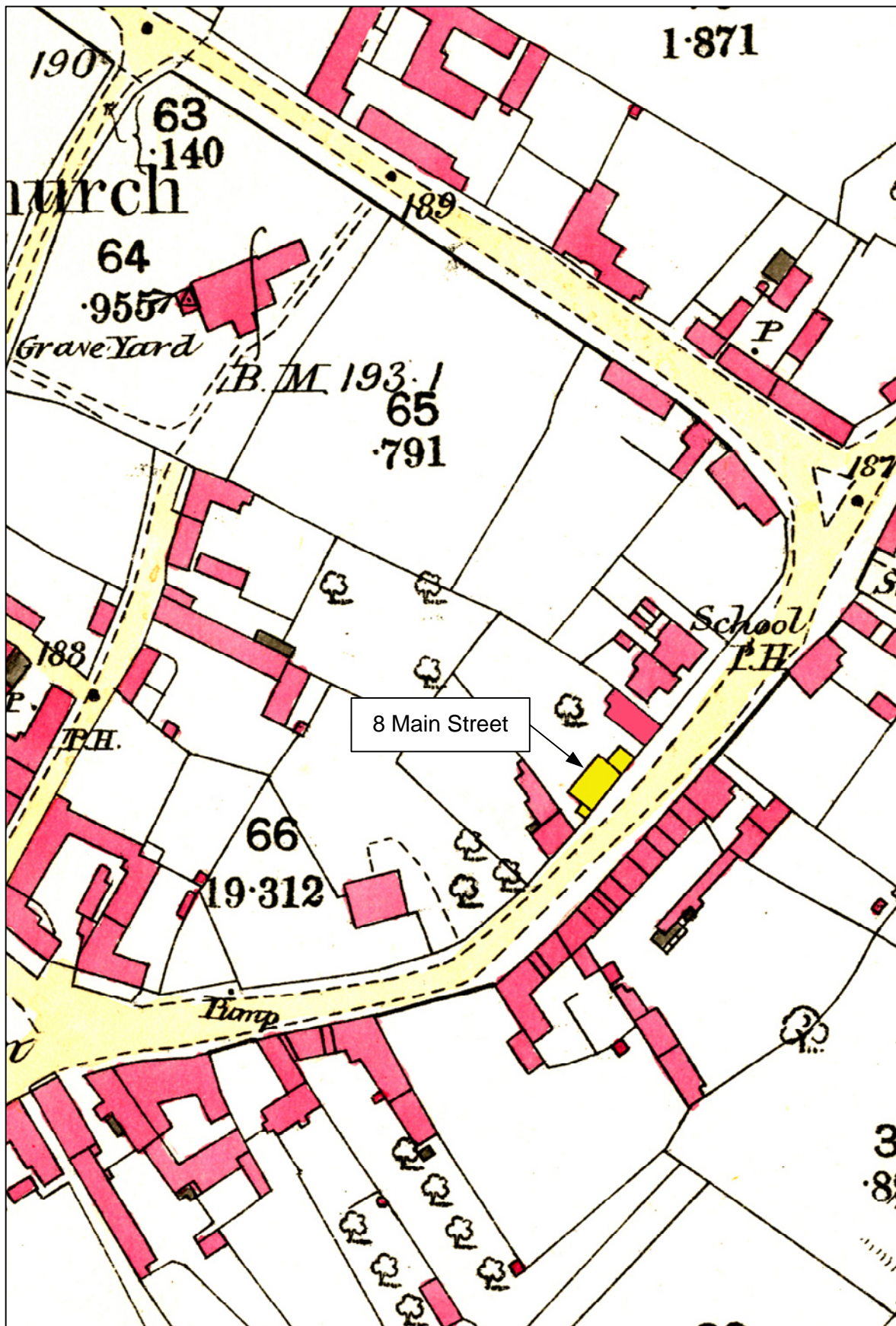


Supported by

**The National Lottery®**  
through the Heritage Lottery Fund







Location Map – Wentworth Cottage, 8 Main Street, Caldecott  
(OS First Edition 1886)

## **HISTORIC BUILDING SURVEY REPORT**

### **WENTWORTH COTTAGE, 8 MAIN ST, CALDECOTT**

#### **Survey**

Date of survey: 20<sup>th</sup> October 2013

Surveyed by: Nick Hill & Robert Ovens

#### **Summary**

The fine stone front of this house, dating from the late 18<sup>th</sup> or early 19<sup>th</sup> century, conceals an earlier house of 17<sup>th</sup> century date. The original house was rather lower, of 3-room plan, with the offset front door leading into a central hall, heated by an inglenook fireplace. A small parlour or kitchen to the east end had another inglenook fireplace. A ceiling beam has chamfer stops of unusually elaborate design. A small extension for service use was added around the end of the 17<sup>th</sup> century.

#### **Site**

OS Ref: SP869936

Orientation: For report purposes, the front to the road is taken as facing S.

The house fronts directly onto Main Street. There is a small extension to the E, with the entrance to the rear yard from the W.

#### **Materials**

Coursed ironstone/limestone, with roof of Welsh slate.

#### **External features**

The house has a main range of two storeys, with a single storey extension to the E, of narrower width than the main range.

The S front has well-coursed ironstone with limestone dressings and quoins of brownstone/ironstone. Chamfered brownstone plinth, rendered below. Front door offset to the W, with 3 windows to ground floor and 3 windows to first floor directly above. All openings have bonded jambs, segmental arches and central key-blocks, of triple pattern to ground floor. On the ground floor a continuous limestone band links the lintels of the doorway and its flanking windows. Above the first floor windows there is a continuous limestone band course. Over the door is a limestone tablet, with diamond-set lozenge and projecting cill. It is of typical design and location for a date-stone, but the face is blank, with no inscription. Perhaps it had a painted date. 3-light timber casement windows, plain-boarded door. Two-flue brick stack to ridge, on stone base.

The E gable is partly blocked by the E extension. The raking line of an earlier, rather lower gable is visible to the upper part. Single attic window, probably fairly late. Coped gable parapet, plain kneelers and apex. The earlier gable line is also just visible on the W gable. Here there is a square plinth of slight projection, with render below. Above, the gable has various patched re-facing, with the upper part probably rebuilt in

the later 20<sup>th</sup> century, to include two attic windows. Coped gable parapet, plain kneelers, single-flue stack of modern brick, with on seating to coping below.

The rear N wall has less well-coursed ironstone, with some limestone, especially to the upper part added when the eaves was raised. Door offset to E, with modern porch. The ground floor has a 2-light casement window E of the porch, with indications that it was once a doorway, and also with a redundant old timber lintel, set higher up than the current lintel. Just W of the porch is another blocked doorway, with large jambs visible to the E, though none to the W. Above here is a large inserted stair window. To the W end, a set of French windows. Two further windows to 1<sup>st</sup> floor. This elevation has been much patched and altered, so the earlier appearance is unclear.

The E extension front wall has alternating courses of ironstone and limestone (typical of 17<sup>th</sup> century buildings in the area). A window was inserted in the 20<sup>th</sup> century (not present on a photo of c.1910). Good quoins to SE corner, but none at the junction to the main building. The extension gable has mixed ironstone and limestone and a plain verge, with large triangular ironstone blocks. Good quoins to NE corner. The rear N wall had a doorway to the E end, now blocked by a modern extension, which fills in the corner.

## **Internal features**

### Ground floor

The front door leads into what is now a long room, occupying the two western bays of the house. A transverse ceiling beam must have been the location of a partition, dividing this space into two rooms – though there is no evidence visible for a partition. The beam has very fine chamfer stops to both ends, of ogee form with an additional bar, and carved grooves – an unusually elaborate stop for the area. Ceiling joists are modern throughout, though they fit into original mortices in the transverse beam. The E side of the room has a large inglenook fireplace, with straight chamfered beam, with run-out stops. Ironstone cheek to N, and rebuilt ironstone fireback. Above the ingle beam the ends of timber bearers are visible, supporting the masonry above. There is also a thin built-in timber plate. Inserted fireplace of modern stone to the W gable, and modern stair against the N wall.

The E room, which is quite narrow, also has an inglenook fireplace, back to back with the one in the main room, making a deep centrally-located chimneystack. Slightly arched beam, chamfered with run-out stop to S and no stop to N. The cheek, to the N side, is plastered. Modern floor joists. The E extension also has modern ceiling joists, and no fireplace.

### First floor and roof structure

The first floor has the large chimneystack from the double inglenook fireplace but no other historic features are visible. The roof is of 19/20<sup>th</sup> century date, with softwood purlins.

## **Site history**

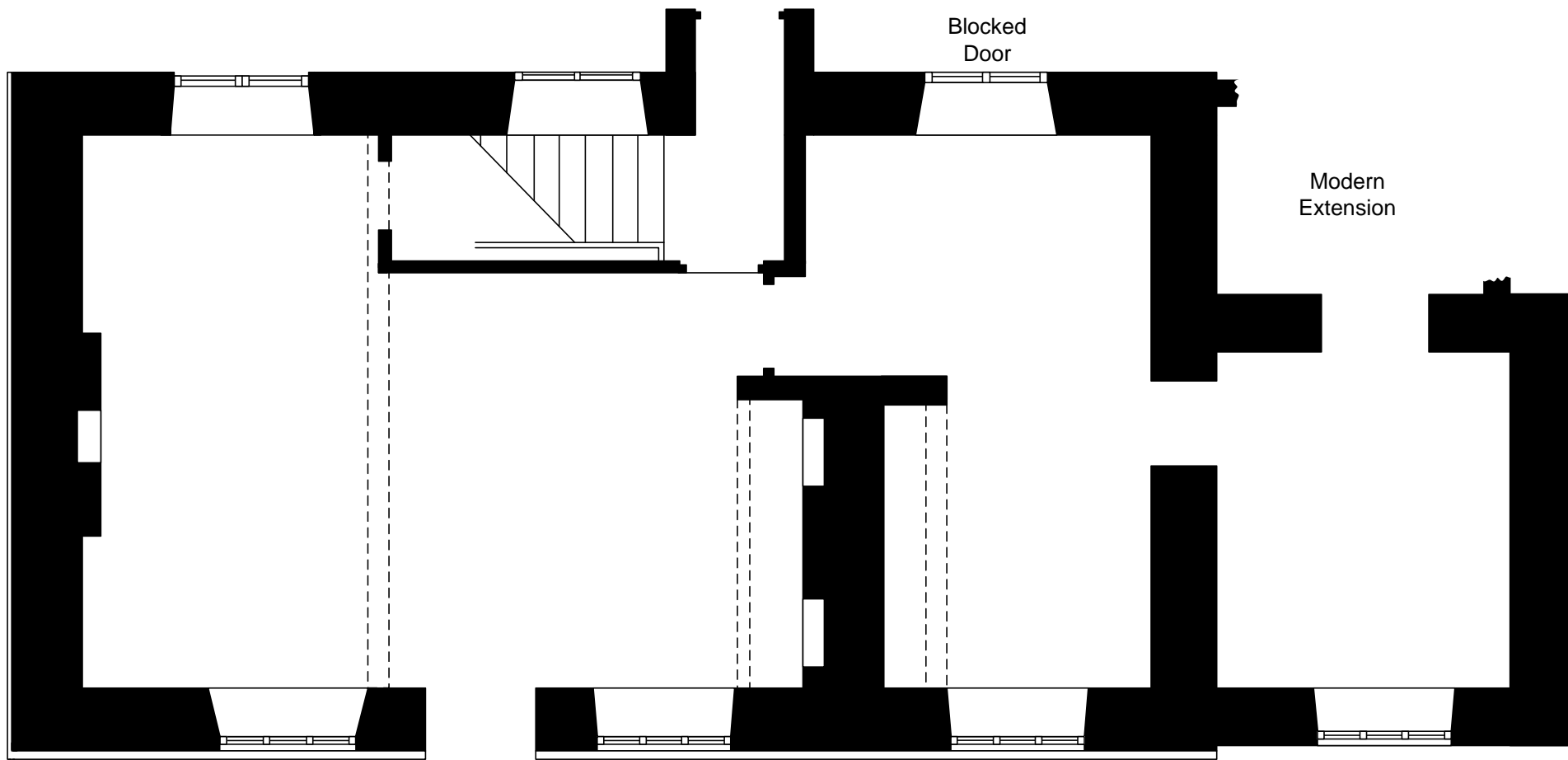
The 1800 enclosure map shows the building with the main range and a narrower width extension at the E end, as existing. The property is shown as a single plot together with the adjoining No 6. This single ownership is also indicated on the 1886 and 1904 OS maps. The 1886 1<sup>st</sup> edition OS map shows a very small extension also at the W end, now lost. This is visible as a lean-to on the photo of c.1910.

## **Date and development**

This house was originally built in the 17<sup>th</sup> century, as indicated by the surviving transverse beam, with stops of 17<sup>th</sup> century type. The original house was lower, of 1½ storeys, and probably thatched. It had a central hall, with entry door and inglenook fireplace. A partition to the underside of the transverse beam must have divided off the W room, which was an unheated service space. The E room was probably the parlour, though it is unusual to have an inglenook fireplace in such a room. Alternatively, it could have been in use as a kitchen. The location of the original back door is unclear. There was a full first floor structure for bedchambers above.

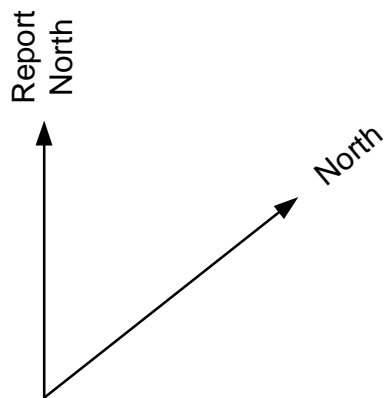
A small extension was added at the E end, probably in the late 17<sup>th</sup> or early 18<sup>th</sup> century. This was unheated, so must have provided further service space. In the late 18<sup>th</sup> or early 19<sup>th</sup> century the roof was raised and the main house was re-fronted. Major internal alterations were carried out in the 1960s.

Nick Hill  
October 2013



GROUND FLOOR

8 MAIN STREET, CALDECOTT



NH / RO October 2013





The south front



View from the south-east





The rear north side



Photo of c.1910, showing No 8 with extensions to west and east



Interior view, looking east towards inglenook fireplace

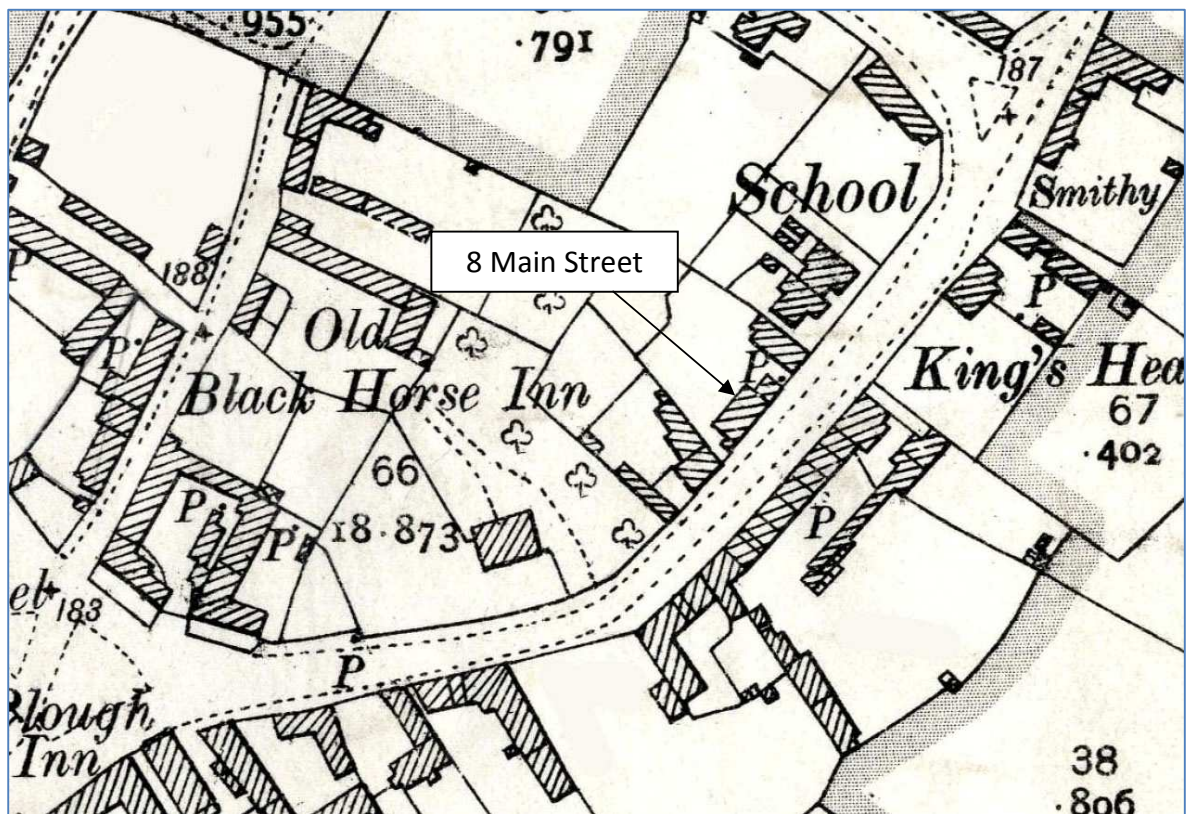


Finely carved ogee chamfer stop to ceiling beam





Caldecott Enclosure Map - 1800



Caldecott - OS Second Edition 1904